

### **The Fool**

Most Fool cards copy the bucolic mountainside scene, the butterfly, and the potential misplaced step that will send The Fool tumbling into the unknown. The Fool's Doubt and A Play for the Heart are especially suitable for this sense of discovery. The Fool has become accustomed to certain possibilities, has let them slip away. The Fool, however, is not yet sure of what these possibilities mean. As a result, he is now open to thinking about the unknown. He is open to confronting the possibility that his own past mistakes are all that separates him from what he may become. As The Fool is open to these possibilities, it is possible for The Fool to come to some sense of realization and accept the possibility of a change. The Fool's Doubt is the most subtle, but nonetheless powerful of these seven cards. It expresses the person's attitude toward his past mistakes, not in the sense that they are all a part of his past, but in the sense that they are all an element of his present, and thus leave no room for a change in his attitude toward life. The Fool is not willing to let his past mistakes define him.

### **Fool's Dream**



### The Magician

Traditionally, The Magician is one who can demonstrate hands-on magic - as in healing, transformative rituals, alchemical transmutations, charging of talismans, and the like. A modern Magician is any person who completes the circuit between heaven and Earth; one who seeks to bring forth the divine gold within her or himself.

Today's magician has neither earthly nor celestial connections to his or her divine spark.

The Magician is a spiritual sage, teacher, guru, magus, or hero.

Because The Magician holds his or her divine spark inside them, he or she has the power to turn into a living embodiment of the divine.

She or he draws upon the same energies, resources, and resources as those who do.

The Mystic is able to communicate with beings from the other realms and beyond.

The Mystic holds his or her divine spark inside them and can use its power to command, manifest, and communicate with others.

He or she can become a creature of light.

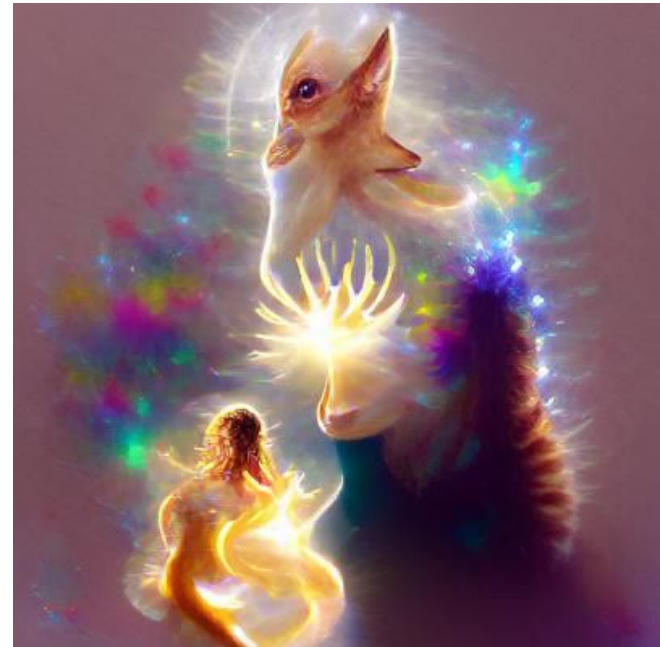
The Mystic is able to change the nature of reality.

The Mystic is able to transcend time and space.

The Mystic is able to manifest himself or herself into the physical world.

The Mystic is able to transcend physical boundaries.

### Living embodiment of the divine spark and a creature of light



### **The High Priestess**

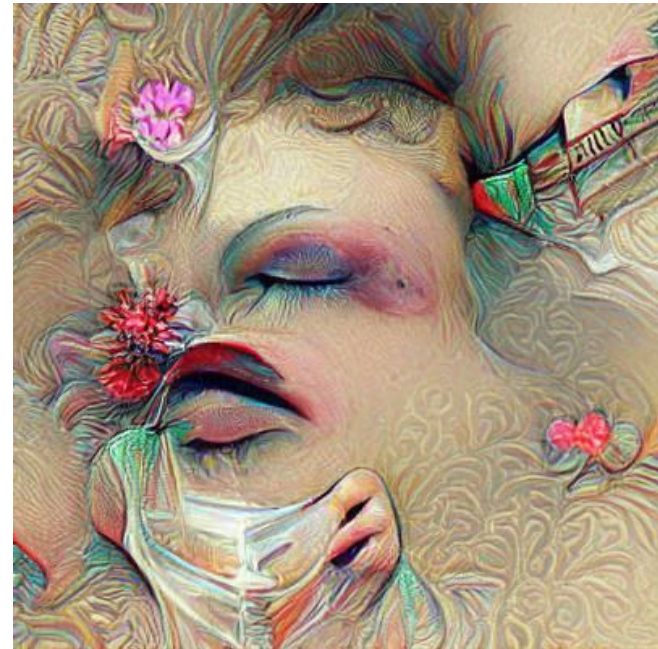
The High Priestess can be viewed as a kind of female Pope (a Papess), or the ancient Egyptian Priestess of Isis, the even more ancient snake and bird goddesses, the Greek goddess Persephone, or Eve, before the fall.

While being described as a female person (the word for "female" in Greek is "Aesir", and the word for "person" in the Hebrew language is "Yid"), the High Priestess is still a High Priestess, with the attributes of the priestesses of the gods (especially the ancient Egyptian goddess Isis and the Greek goddess Venus), the mother of the God (Hebrew is YHWH, and in Greek is Aetas), and the ruler of the most holy and holiest place (the Temple of Solomon in Jerusalem, where the seed of the Abrahamic covenant was planted).

She is a spiritual ascetic, renouncing all possessions (on the sole basis that it is a mistake to associate that with being a woman).

It is said that the High Priestess is a creature of great beauty (sickly, hedonistic, intoxicating), yet even if she has more than a little of that, she still is a woman.

**Sickly, hedonistic, and intoxicating beauty**

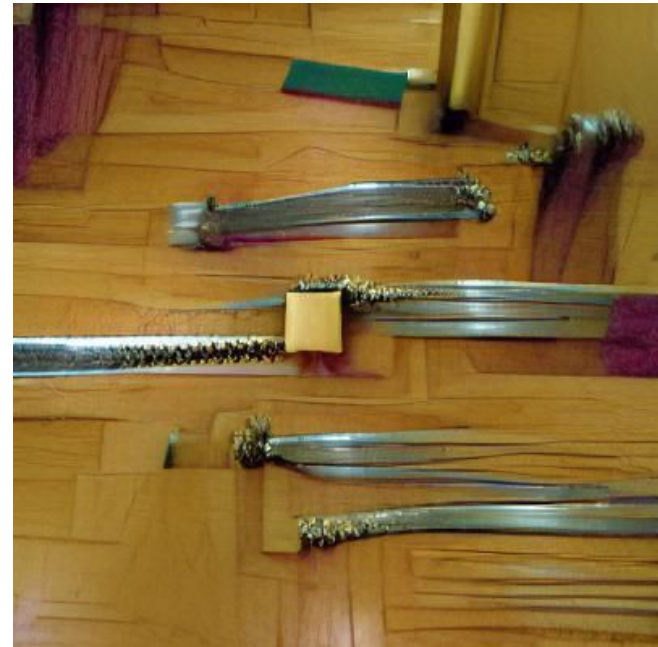


### **The Empress**

It is The Empress who provides us nourishment and security. She is also sometimes seen as delighting us with flowers and fruit. A potentially terrifying aspect of this archetype manifests itself whenever karmic mood swings wipe out our plans, like a storm that has come upon us. When we are led astray, we may be in danger of being crushed under a multitude of swords. Empress' inherent gyrations cause us to know how to turn to the Empress for help. The potential for shattering these plans might give us the courage to break free from the ancient and sometimes difficult patterns of our own psyche. Our Empress becomes our nemesis and can be a protector, a conductor and a friend to us. She makes us aware that we are not to seek our own power and should be guided by our wisdom and intuition. The Empress as an ally is neither of our enemies nor our friends. She is a potential ally to the mystic psyche of the individual. Our Empress is the protector and we have to learn to trust her. However, she will also show us that there is always the danger of destroying ourselves.

The Empress is not our savior. She is our protector, a guardian.

### **Gyrations of an empress to prevent crushing swords**



### **The Emperor**

This archetypal ruler is responsible for the affairs of a society or community, which are directly proportional to his well being and happiness. He is distinguished from his vassals by the fact that he is the owner of wealth, that he has authority over his subjects, and that he knows how to make use of his power. The king is a great man and a great ruler. His means of existence consist of two things: his wealth and the interest he has in the continued existence of his subjects. He is a ruler who has no concern in the affairs of men, but only in the accumulation of wealth.

The aristocrat or the king is a man who has only one object in life: his pleasure. For him it is not the happy life of a ruler but the life of a hunter. He lives on the food and skins of his animals, and he dies in peace, with a large family, and his people live in safety. But he always thinks about his welfare, and he constantly strives to gain that which is especially his own. He has nothing to do with the affairs of men.

### **Rich hunter king**



### **The Hierophant**

This energy of this card points to some agent or resource that can reveal the secrets of life, the cycles of the Moon and tides, the links between human beings and the heavens.

This card has no name, and is most often associated with this face.

If you recognize the face of the card, you are also connected with a major aspect of your life. The choice between the card and your face, or you, is yours.

For example, if you look at the card with the image of the Latin Goddess, you might decide to cultivate a peaceful relationship with your natural environment, or you might feel a sense of kinship with your counterpart, the Moon Goddess.

The Moon Goddess can represent you in many ways, including her fertility, her goodness and power, and her love and desire.

The choice between the cards will help you to shape your life, and the strength of your connection with the Moon Goddess.

The Moon Goddess has a relatively long age span. Her life is complex, as is that of the person who watches her.

Heavenly Planets are also generally very old.

**The choice between the card and your face, or you, is yours.**





### **The Lovers**

Classically, the energy of this card reminded us of the real challenges posed by romantic relationships, with the protagonist often shown in the act of making an either-or choice. To partake of a higher ideal often requires sacrificing the lesser option. So let's talk about the balance between the two and what it might mean for this card.

The Goal: Make it Feel Like I'm Choosing A Better Option

In a relationship, you and your partner get to make decisions about how you're going to feel in the relationship. You get to choose how you're going to feel about your partner, whether they're the most important person in your life, and what you want out of the relationship.

The more choices your partner has, the more they have to make. In other words, it means they have to constantly think about what you want and how you want to feel. They have to consider the good, the bad, and the ugly.

So what do you want out of a relationship? Do you want it to be a happy relationship where you get to have sex with your partner every day, or do you want it to be a relationship where you choose who you fuck?

The Goal: Make it Feel Like I'm Choosing a Better Option



### **The Chariot**

The Chariot Tarot points to a triumphal feeling of freedom, as if the Charioteer is being paraded through the streets as a hero (or heroine).

Two Tarot cards illustrate this triumphant feeling, the Tower and the Horse. The Tower represents one of the great myths of Western civilization. The Tower is built by a Warrior God, who represents an uncompromising and manly virtue. The horse represents the elephant, and the elephant represents the barbarian, who symbolizes the crusader, a rugged individualist. The Horse represents the Cuckoo, who represents the untamed savage. The Tower and the Horse are not just symbolic, they have real symbolism. They show how the Tarot can be used to represent the spirit of a person or a nation, and how it can provide the clarity of thought and the life-giving energy of the world's great civilizations.

The Chariot Tarot is the card most often used in tarot card readings. This is because the Chariot Tarot is the most practical and broad. It is, literally, a vehicle for harnessing the forces of the great powers.

**The horse represents the elephant, and the elephant represents the barbarian, who symbolizes the crusader, a rugged individualist. The Horse represents the Cuckoo, who represents the untamed savage.**





## Strength

The Strength Tarot represents nature, which, however wild in its primal form, is tamed by our subtler, finer self -- our feminine side, our inner self. On the strength of this self, we achieve our full potential to achieve our full potential. The strength tarot shows itself in the eyes of the cards. It is a direct representation of our true nature, and how we experience the world around us. The strength of the cards is something that has been given to us. As William Blake said, "Everything in Nature is beautiful, everything in Nature is strong, everything in Nature is mighty."

Those who draw the strength tarot can see themselves with a new perspective, which comes in many forms. To show you this power, we can go through an exercise in which you imagine your strength as a strength-symbol. For each card, imagine that you were given a certain strength. For example, let's say that you have a strength card with seven pointed stars. The following might be a way to view your strength:

7 has a symbol of strength, being a point in the sky; the stars represent the seven continents.

## seven pointed stars



### **The Hermit**

While an hourglass was an identifying feature on the earliest Hermit Tarot cards, more modern cards have shifted the metaphor, showing more or less light released from his lantern. It's almost like a living thing, a light source, perhaps, or a kind of radiance. It has a series of effects, such as seeing the sun come up over the horizon, or seeing the traveler on the road.

I imagine that for the ancient person the light might represent the now hidden vital force in their life, the moment in which their strength and vitality is building, or for the ancient person, a kind of spring that comes from the heart, producing a sense of well-being and well-being itself. There's also a reference in one of the ancient books of a "light-wood" that contains life, a non-transparent and interesting piece of wood that the sun had touched, and which the sun, in turn, came from the heart.

A people with a system of cards that shows light, this is a modern person with a system of cards that depicts luminous things.

"Here's a bell."

### **light-wood**



### Wheel of Fortune

The wheel keeps on rolling, churning events in a ceaseless progression of ups and downs, either way freeing us from the past. I love the rhythmic progression and the constantly changing rhythm of the beat to it. You will never have to worry about things like breathing or standing up to your next move in a video game; your body will handle everything. Some will argue that this is where the difference between racing games and shooters lies; you have a limited time to aim and fire. But we all know that the game is designed for you to make quick, precise movements and that it is your responsibility to know what is going on and what to do next.

In these sequences, which seem almost at once to revolve around the same track, it's not that you have to be in control to be effective; you simply have to listen to what the game is telling you. The story of Lizzy's journey begins with a series of events that appear to happen simultaneously, but really are happening in sequence. You begin to get the impression that there is no way to know whether the sequence has actually happened or not.

### Lizzy's journey



## Justice

Often including the image of a fulcrum or scale which helps to balance competing needs against the greater good, and a two-edged sword to symbolize the precision needed to make clear judgments, this card reminds us to be careful to attend to important details.

It's a difficult task.

She's got the heart of a lion, the love of a queen.

A scholar who seeks to understand the human condition, she's a leader in her own right, though seldom seen in public.

A goddess with the body of a goddess, she's often shown with a bow and arrow, spear, or boomerang.

A siren whose voice carries the sound of the wind, she has the ability to summon spirits from the deepest realms of the ocean.

A tomboy who is filled with spirit, she might not be at home on the battlefield, but with a deep passion for playing.

A confident warrior who has always been the center of attention, she's the typical female warrior stereotype.

While all these attributes make her very much a woman, one must keep in mind that she's also a goddess, who brings to us the source of her divine power.

She's got the heart of a lion, the love of a queen.



### **The Hanged Man**

The Hanged Man usually indicates a lack of ability to help oneself through independent action. In his ritual on the third day he said "I have gone too far, and too fast. I cannot do the things necessary. I am as one of the condemned, but it is not for me to make my own salvation. I will be found out and punished. I shall live in hell and I will die a slow, agonizing death."

The Perfectionist in his dream suggests that he is here in a quiet room where he thinks he is alone. In reality he is in a large room full of people. These are the people he has to live with. The Perfectionist is in constant competition with the others and is unable to succeed at doing everything. There is an art to working alone and the Perfectionist knows that. The Perfectionist may be proud of his own ability but is still under constant threat of being caught and punished.

The Garden of Eden: the Perfectionist is constantly being shown that he cannot progress.

The Perfectionist in his dream suggests that he is here in a quiet room where he thinks he is alone. In reality he is in a large room full of people.





## Death

As the scythe cuts the cords that link us to the past, it liberates us to go forward without fear, because we have nothing left to lose.

As a stranger.

As a friend.

As the protagonist of a story.

As a main character.

"A friend with a scythe...!"

-A lot of the way we are familiar with the world and its people. -A lot of the things we have come to believe in. -A lot of the beliefs and ways of thinking that define us. -The fact that we must work hard to keep up with the times, to keep up with the progress of the world. -We all have one thing in common; we have to be strong to face the future. -The people of this world are sometimes lonely. -To become the friend of the protagonist, I am going to tell you the most difficult part of my life. -The fact that no matter how hard you work or how smart you are, there is only one person who will always be there, waiting for you.

there is only one person who will always be there, waiting for you



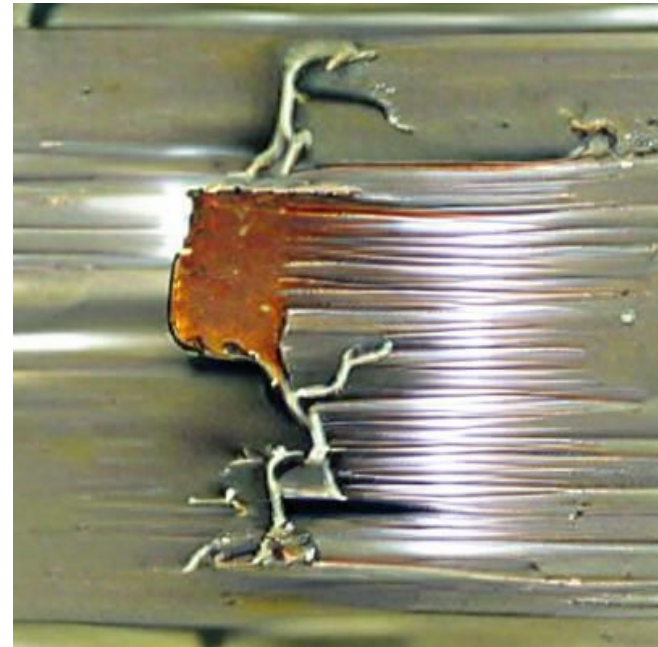
### **Temperance**

Metals must undergo extremes of temperature, folding, and pounding, but the end product is infinitely superior to impure ore mined from the earth. When used for energy and scrap, the result is a more efficient, safer, and long-lasting metal.

Inherent in this process is the production of a high purity of metals in a fraction of the time required by other processes. The ore is initially ground by crushing the grains to produce the metal and then by heating the crushed metals until they yield the desired metallic form. Alloys and "flakes" are produced by adding water or chemical vapors, which melt and separate the individual metals into their component components.

Although the metal is highly oxidized, it is also highly charged. When enough metal is added, the whole metal will be electrically charged, and conductivity increases dramatically. Thus, alloys are easily shocked or struck by electrical charges. The effect is greatly enhanced by shock plates, electrodes, or similar equipment.

### **Metallic form**



### **The Devil**

The Devil image which emerged in the mid-1700s gives us a more sophisticated rendition -- that of the scapegoated goddess, whose esoteric name is Baphomet. Volcanic reserves of passion and primal desire empower her efforts to overcome the pressure of stereotyped roles and experience true freedom of soul.

Maintaining a sense of belonging to her cultural and religious heritage is paramount. By taking the totem and barbeque and standing alone, we are honoring the Baphomet, not the Devil.

In the Pagan Circles, a typical ritual involves an offering of a flaming torch to the altar and the sacrifice of a symbolically significant object, such as a flower. This symbol represents the circle of life, the people and the animal kingdom that are united in the spirit of the god or goddess, though we are often made to feel unwelcome for the gift of our own symbol, and for our contribution to the common good.

On a modern hot-spot such as Burning Man, where there is a more liberal commitment to paganism, our Pagan identity is seen as a result of our participation in a celebration of the festivals of the world.

### **Torch to the altar and sacrifice a flower**



## The Tower

In practically all renditions of the Tower, disaster is striking or has just struck. The demons of madness and despair are released from ancient hiding places, and nature conspires with human failings to destabilize a society.

The Tower, an immense structure that towers over Los Angeles and many other major cities, serves as the base for the White Lotus organization, which aims to use its power to create peace and prosperity in the world.

[Contents show\]](#)

### Description

The Tower is the spiritual core of the White Lotus organization. It was built by a wise, benevolent deity, and as such, the Tower is always known as "the Tower" or "the Ancient One." It contains many magical, sentient artifacts and psychic powers. In recent years, the Tower has been progressively weakening, and many people have begun to fear that it will crumble to dust at any moment. However, there is still hope for the future, as the Tower is known to have power over the spirits of the dead, allowing them to give their gifts to those who seek them out, and to summon the spirits of the dead at will.

Several battle-hardened allies have volunteered to work for the White Lotus.

## Tower over Los Angeles



### **The Star**

The soul is responding to celestial influences -- forces that can provide the personality with a stronger sense of purpose. When you let go of your old patterns, you can think more clearly, and have an easier time doing things that seem more difficult. A good therapist can help you work through the things that are bothering you and help you see them as part of a larger pattern. This way, you can be more willing to acknowledge that you have the power to change.

If you have trouble letting go of old patterns, it may be helpful to focus on giving up something that isn't working for you, rather than trying to maintain a healthy lifestyle that doesn't have an impact on the positive influences you're trying to block.

In many cases, it may be helpful to cut off contact with your old self, and work with the new self. If you want to get the energy up to a higher level, you can sit with the new self and ask it to meet your need to expand. It may be a struggle, but it can be done. This is what the Golden Gate discipline is.

### **Therapist at Golden Gate Bridge.**





### **The Moon**

The Moon card represents the ultimate test of a soul's integrity, where the membrane between the self and the unknown is removed, and the drop of individuality re-enters the ocean of being.

The Moon card symbolizes the final days of the year and represents the potential for renewal and transformation, yet it also represents the beginning of the end of the year. The Moon card is also referred to as the "sleeping Mother" or "The Sea," for it is the mother of the year. The Moon's position between the Sun and the Earth in the zodiac signifies that the year will last from November to May, when we will start to transition into the next season. It is also the season in which the relationship between human and god becomes more intimate. The Sun is the source of life and light and this is symbolized by the Moon. The Moon was the "sun of love" in the ancient world, which is symbolized by the man or the god. The Moon is symbolized by the color of the palette.

The Moon card is also a color pairing. It is the most common color combination for the Moon symbol.

### **Sleeping mother in the sea**



### **The Sun**

The Sun's radiance is where one's original nature can be encountered in health and safety. The limitations of time and space are stripped away; the soul is refreshed and temporarily protected from the chaos outside the garden walls. Like the Sun, the garden walls are the meditative locus of the temporal and transcendental aspects of human life. The Sun's radiance is the source of all the beauties in the garden and the only visible way to reach the core of the cosmos.

The human figure (davidson, 'a man'), whose existence is confined within the garden, is connected with the garden and the Sun in a cosmic order that is non-local. In the garden, the presence of a human being is normal. The human figure (davidson) exists only within the boundaries of the garden. If the human figure is not visible within the garden, it can never be considered a person. In fact, human beings are only visible within the garden when the sun is directly overhead. The human figure is only a symbol, an illusion, and a projection of the beauty of the garden.

**The human figure (davidson, 'a man'), whose existence is confined within the garden, is connected with the garden and the Sun in a cosmic order.**



### Judgement

The Judgement card, sometimes called Resurrection, represents the great reunion that the ancients believed would happen once in every age. This was the time when souls are harvested and taken home to their place of origin, outside the solar system. As the old man was once a soul of the Osiris, so the old man was once a soul of the Sun-god Osiris. This means that he has the spirit of Osiris in him, and, in the past, he's been its herald. However, it's not enough. That old man has been haunted by this murderous spirit of the dead; the occultists tell us that the old man's experience of the time is actually the same as that of a hunter who is haunted by his prey. His past actions are determined by a link between his life as an Osiris and his life as a hunter.

So, as Osiris is being reborn, it's also a time for the young men to step up to take his place. That's why the older men are called the Chosen, the Chosen of the Sun-god Osiris. These men are called to be Osiris' executors, to help him in his rebirth and to carry out his final, symbolic actions.

### Chosen of the Sun-god Osiris



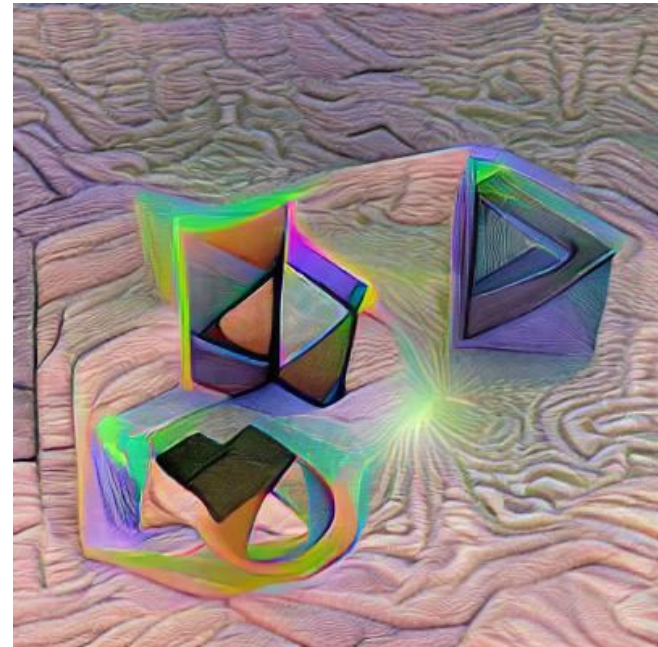
### **The World**

It is a female figure that has become our standard World image. She originates in Hebrew, Gnostic, and Alchemical lore, and stands between heaven and Earth as the cosmic mother of souls, the wife of God, and our protector from the karmic forces we have set loose upon the Earth in our immaturity and ignorance. She has the power to transport souls and bring them to the celestial bodies to be reunited with the celestial bodies and with God.

And as we have always known, in the reality of the human soul, the three dimensions are inseparable. The soul is born into the body with a body and an image, an identity, and a being. But what about the soul as a soul, the soul as the universal being? The soul as we know it is an image, an image that is found in the human body as well as in the cosmos and in the more advanced forms of human intelligence.

The astral body is found in the stars and celestial bodies. The celestial body is found in the creation. And in that place of creation, there is a soul that we know, and that we have created in our imaginations. The image is not a part of the soul, but it is our soul. The soul is also the image of God.

### **Three dimensions**



### **Ace of Wands**

An Ace of Wands symbolizes a pivotal act, or fateful step, that will set loose a chain of events leading toward your desired goal. The ancient art of divination and magical constructions was the foundation for all great works of magic. However, the four cardinal points of the compass and a star representing a master of a particular practice all have their uses in occultism and magic. The Ace of Wands symbolizes the perilous course of fate, the shape of your fate, and the path you will tread to reach it.

#### **THE ACHIEVEMENTAL SPELL**

The most important act in any spell is called the "Awakening." Once the Ancient Spell is performed, the magical effect is complete. While a person is sleeping in the deep sleep, the soul is still from the body. The ancient sorcerers had their apprentices conduct the ritual at night and lay in the coffin to be awakened with the proper knowledge. The apprentice who performs the ritual fully knows what he needs to know to pull the lever and accomplish his or her goal.

The ancient sorcerers had their apprentices conduct the ritual at night and lay in the coffin to be awakened with the proper knowledge.





## Two of Wands

The Two of Wands, often portrayed as crossed wands, imply a deadlock due to energies working at cross-purposes. The only way to overcome this problem is to simply step back and allow the two energies to continue their competition.

Use the wand of your choice in the Wizarding World

Wand: The wand is the quintessential emblem of Wizarding culture. Wizards use this magical object to detect magic and interact with it. The wand is both a symbol of magic and a powerful tool for shaping its effects.

Wands are usually made of wood, but are also available in metal, stone, or other materials.

Thinking on Wands

When you are contemplating on the wand of your choice for the day, consider the following questions.

Do you consider the wand to be a tool?

Do you take the wand into your hand and hold it in your grasp?

Do you feel the wand's power?

Do you feel the wand's presence in your hands?

Do you feel the wand's weight?

## Thinking on wands



### Three of Wands

In the illustrated Tarots, the human character is standing on his balcony, watching ships leave the harbor, loaded with his goods for far-off ports, dreaming of the fortune he will reap if all goes well. From the deck, the whole scene is an ode to the divine.

In the telegraph scene in *The Man Who Reads the Telephones*, he sees his life flash before his eyes. It's a fitting juxtaposition, since telephones are a symbol of the advent of mass communication, and a play on words as well.

The Pluralization of the English Language

Throughout the story, Stan is often called by the plural pronoun "them."

This is deliberate. The language is built on the notion of the singular. You cannot count two people simultaneously and neither can you think of them. There are only two of us, and we are all the same. We are all one family of people, and the only thing that distinguishes us is our different languages, our different ways of speaking. The linguistic plural, on the other hand, is a simplification of our number one identity.

### The Man Who Reads the Telephones



#### **Four of Wands**

A Four of Wands is the teamwork card, often symbolized by two couples who have come together to create something profitable and enduring. Quite likely, they will create a gift for the future -- a business, hospital, theater or university. Some festivals have four of wands in the mix, as did the U.S. Postal Service in 2008.

1. The U.S. Post Office will be celebrating four years of the U.S. Postal Service this summer. The FIFO needs four of wands to overcome each obstacle it faces.
2. The Beatles and the Beatles will be honored at the Summerfest celebration this summer. The Beatles will be wearing special badges that give them a special holiday greeting, a special stamp and their own magical four of wands.
3. The U.S. Postal Service will be honoring the American Teacher of the Year, Carol Goodhart, this summer. She received the highest grade in the nation's history, a 100 percent.
4. The Summerfest festivities will include the world premiere of "Happy Days," the musical about two brothers who form a band to save their homeland from communism.

**Some festivals have four of wands in the mix, as did the U.S. Postal Service in 2008.**



### Five of Wands

The Five of Wands symbolizes struggles caused by ambitious maneuvering and a competitive urge. This could be about someone who is pushing his or her agenda forward at the expense of others. A person who is saying things that are not what they meant or say they would never do. A person who is calling out someone else for what they say or do. A person who says things that are threatening or threatening.

Some people can be defined as five of wands. These include:

A person who is trying to turn their actions around.

A person who is constantly battling with an opponent.

A person who is always attacking and dealing with what they have to face.

A person who is always showing up.

A person who is always complaining.

A person who is always disappointed.

A person who is always down.

A person who is always complaining about something.

A person who can't handle defeat.

A person who is always eager to win.

A person who can't take a good loss.

This personality type is referred to as a wands person.

Some people can be defined as five of wands.



### **Six of Wands**

The Six of Wands points to the respect and acknowledgment due to you for your efforts to solve the problems of your community. The image is usually of a victory parade, after the celebrated leader helped troops win a pivotal battle. It's an important image to show your community and your leaders.

Participating in a celebration parade will help you to demonstrate your resolve. It also shows you have people and they are willing to respect your leadership. You're giving them a reason to be proud of you.

Another benefit of the Six of Wands is that it can be seen as an invitation to have fun and to achieve your goals.

Sticking to your plans

Creating a Six of Wands requires time and effort. It takes a lot of patience and determination. Remember, the Six of Wands is not intended to be a badge of honor. It's about a challenge and a challenge is worth a lot of effort.

The Six of Wands may be a sign of encouragement and willingness to give your community a kick in the butt. This may help you to get past certain obstacles.

### **celebration parade**





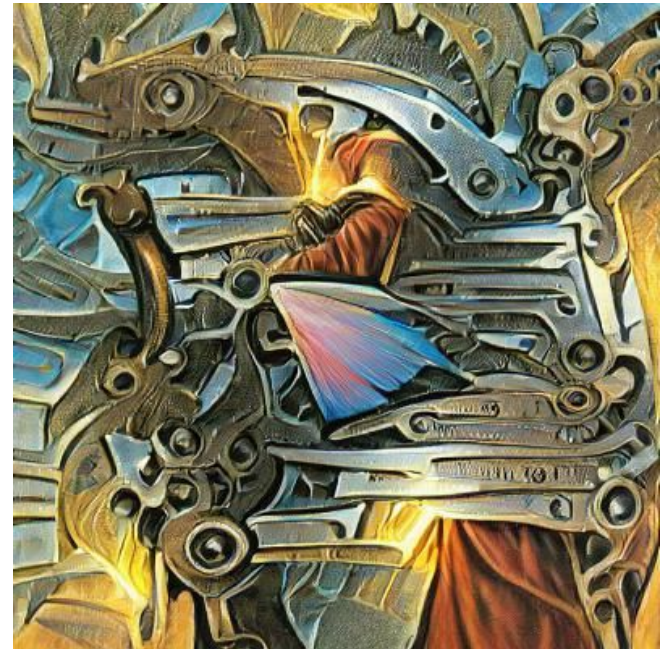
### Seven of Wands

The Seven of Wands generally shows a person who is nearly always successful in working his or her will in the world. This is a person who is truly gifted, standing head and shoulders above the rest. This person sets standards and sets examples that exceed previous conceptions of what is possible. This person is fair. This person is compassionate. This person is honest and trustworthy. This person has an appreciation for the importance of creating something that is of benefit to others.

I've had a few personal experiences with this archetype, and it's very similar to what I've been describing. During the very early stages of my career, I found myself constantly questioning whether I was being true to myself, and whether I was being honest with my peers. In a sense, I was driven by the idea that if I was honest, I'd be allowed to continue working. I was slowly developing an inflated ego that I couldn't shake until I put that into practice.

Some of the key words I use to describe this archetype include "iron sharpens iron," "swift is the choice," "graft is the key," and "transcendence." These words are taken from Confucius's book *The Art of War*.

key words I use to describe this archetype include "iron sharpens iron," "swift is the choice," "graft is the key," and "transcendence."



### **Eight of Wands**

The Eight of Wands often shows a flight of spears or staffs moving through the air in formation, as if a hidden group of archers had let them fly all at once. Its big black eyes are in the shape of full moons, while the magic crystals on its chest and arm show the influences of dark magic.

It is somewhat smaller than a Centipede Spider, and far less gaunt than its cousins. Its eyes and body are very similar to a Human. Its long, slender legs are shorter than the Centipede Spider's but very strong. Its long tail is shorter and narrower than a Centipede Spider's tail. It has a long, powerful tongue and two huge clawed hands.

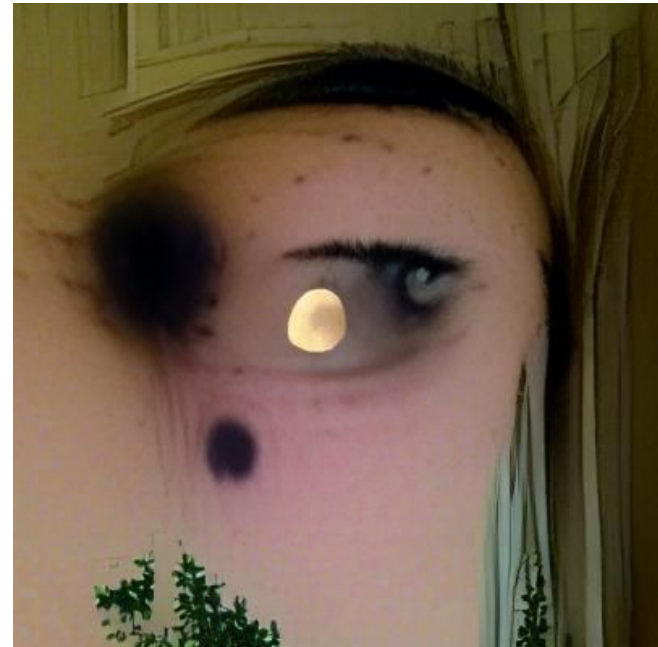
Plantans, Spellwands, and other Magic Items

Plantans

Plants are fantastic and wondrous living beings that stand between man and magic. The plants contain magical power that allows the plants to power themselves.

Plants are very useful to one's magic. They allow you to gain skill in all forms of Magic as long as you follow their rules. They are the equivalent of a Mage's Sorcerer.

**Its big black eyes are in the shape of full moons**



### Nine of Wands

In the pictured Tarot decks, the protagonist is shown as too exhausted to be effective in defending his gains, yet resisting the suggestion to ask for help or step down. He or she hasn't had the chance to totally heal from past blows, and is still up there taking another beating. This is a cue to the reader to address the situation directly.

In the summary below, a specific concept is highlighted by writing this as "the" character.

A message from Tarot for the Girl with All the Gifts

One of the most useful things I've learned about Tarot is that you need to practice different ideas. That's because the nature of the Tarot is that each card represents a particular part of your life. You might have a "bad" wife, an unkind father, a boss who treats you poorly. And you could be making choices that affect everyone in your life.

When I'm playing Tarot, I have to pause and think about the things I might be doing in the next five minutes. Or the next ten. Or the next twenty. If I'm playing through the girl card, I have to remember to do the following:

Look in the mirror.

Feel how I'm feeling.

### The girl with all the gifts.



### Ten of Wands

The person shown is in no position to rest until he makes it inside the stout walls of the well-defended castle in the distance. If he fails, he will become prey for the highway robbers after dark. The traveler is then in a position to start heading downriver, and as such, he might as well hit the road and see if he can catch a ride.

The sequence of actions that follows is likely to be the most helpful in determining whether you should head north or south. If you are going north, do so on foot. If you are going south, head east. If you are going south, head west. The extra miles that you will need to cover are not nearly so bad as it might appear.

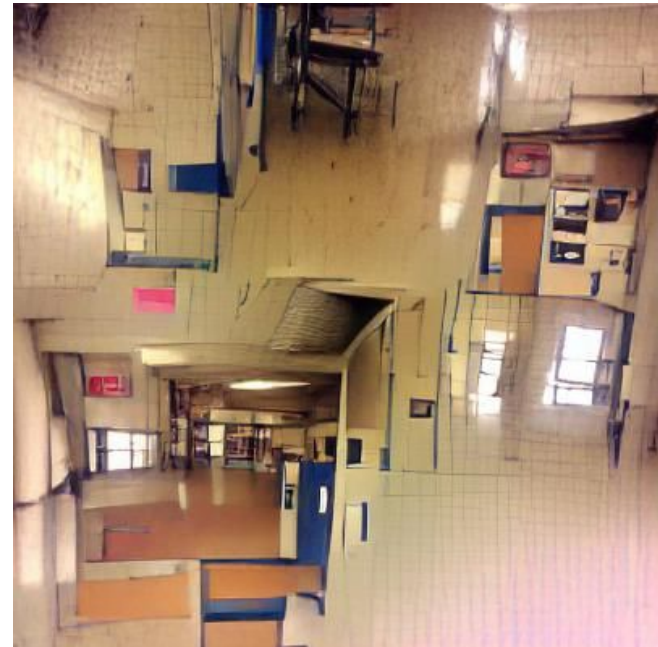
[GUTS] So how far do you think you can run before you need a water bottle?

[GUTS] [GUTS] So how far do you think you can run before you need a water bottle?

[GUTS] [GUTS] I have only just learned the name of this thing. It will be called the Hell Hole.

[GUTS] [GUTS]

### the Hell Hole



### Page of Wands

This archetype is that of a unique individual, a nonconformist, often something of a bohemian, definitely independent by nature. They are more likely to be in the crowd, and they don't have to fit in. They often find themselves cutting off people, such as bartenders, because they can't be bothered. They may be uptight, and the occasional joker, but their unconventional view of life can be seen as one of the most attractive aspects of them.

The archetype that comes from New York and San Francisco is more likely to be artistic and is more likely to be successful. People who are this archetype will go out of their way to make people happy, and they like to do everything for the sake of making other people happy, in whatever way possible. They are often seen as introverted and artistic, but they also like to party and are very likely to dance. The archetype is in that place in life where you don't want to be a part of the crowd, and the more you can make people happy, the better you're going to get.

### New York and San Francisco





### **Knight of Wands**

Traditionally, The Knight of Wands indicates the energy of an instigator, a fire-starter, a feisty and easily provoked character who is liable to attack first and ask questions later. However, in my view, a more accurate description is that of a malicious misanthrope, someone who often appears to have an agenda of his own. A knighthood is an opportunity for the Knight to advance his own agenda. By gaining a knighthood, he can easily create a disinclination to question his own motives, to cause others to question their own motives, to ridicule those who might question his own motives, and to promote a right wing ideology of his own. Such a Knight would probably not be a "good" person.

Knight of Wands by Alan Moore, page 3

It is not surprising that the knight of money would become the knight of the Throne. But the sudden rise of the Knighthood is a reminder that the name of the man or woman who claims a knighthood is no guarantee of the truth of their claims.

Knight of Wands by Alan Moore, page 11

**Knight of money becomes the knight of the Throne.**





### **Queen of Wands**

Traditionally, representing the energy of a Queen, this woman represents the natural manager, whose gift is to inspire teamwork and divvy up tasks. The Queen is the embodiment of the mythical Goddess of creation, whose challenge to be the dominant and decisive woman is timeless, but especially important for us in modern times.

A powerful example of the Queen is Evangeline, the Queen of Scotland. She was the fifth wife of James I, the youngest of the four kings of England. She was 12 when she married King James. Their children: James I, III, and IV. This is an important symbol to remind us that our life is on the line when we fall in love.

While the Queen is the symbol of death, the opening of a new chapter in human history, the Powerhouse of the Universe is the Queen of the Universe. This is the symbol of renewal of the Universe, the cyclical aspect of the universe.

Like the solar system, the solar system is made up of 4 elements, which are: Earth, Air, Fire, and Water. Earth is the core of the solar system.

### **the Queen of the Universe**



### **King of Wands**

Traditionally representing the energy of a dynamic King, this man represents the classic conquering hero. He represents a wise and powerful King, both physically and mentally. For our inspiration, we also see the King in a variety of other public figures including Samuel L. Jackson, Richard Gere, James Franco and Will Ferrell.

He is also often associated with the torch in ancient Europe, which was known as the Wurm (or Wurm, Wurm). In the mythology of European peoples, the Wurm is a living force which can turn into a dragon and it's at the heart of the fairy tales and mythology of Europe.

Another interesting point to consider is that there is a centuries old misconception in some cultures that the first King was a queen. This mythological figure is the god Odin who was the first to take the throne in Sweden (although the Vikings ruled the world for a while before that). Odin was not a man, but a giant or 'true god'. This is how he originated from the Norse gods, who in turn became the mother.

the Wurm is a living force which can turn into a dragon



### **Ace of Cups**

An Ace of Cups in this position generally shows a hand holding up an overflowing cup, which gives forth an endless stream of water, wine, blood or soma for the people's refreshment and healing. It's the greatest blessing a person can receive.

It's also the most demonic. If the person touches a cup and it starts leaking blood or vomit, then it's a major curse.

I strongly advise that you avoid drink and possession if you can. If you must partake, be sure to take an antidote as well.

4) How can I put an end to drinking and possession?

You can drink and possess if you want. We can end the entire system of Drink and Possession if we're serious about getting rid of it all. If you're prepared to put an end to drinking and possession altogether, then you may want to consider the following steps:

- Stop drinking.
- Go to a Zen temple and meditate.
- Consider using a lot of herbs. I personally try using a mixture of different herbs. Just make sure to stay away from alcohol and dairy products.
- Keep using herbs.

**Consider using a lot of herbs.**



### Two of Cups

The Two of Cups symbolizes a karmic tie, often portrayed by a wreath or figure-eight ribbon twining around the two cups. Occasionally you see a symbol referring to the union of alchemical opposites (as in sacred sex), pictured as a long-necked flask twined with serpents, its mouth spouting flames, sometimes with wings. A bowl of wine may be placed between the two cups, symbolizing the fusion of opposites. It is an interesting idea, one that I have wondered about. While in the same realm as the occult mysteries, the practice of tarot cards is also studied and studied, and often is the origin of the term tarot card. Tarot cards are a way to evaluate a person's emotional state, and the use of tarot cards to identify the attitude of one's soul toward the situation in which a person finds himself. In some cases, as with the Eight of Cups, it is a way to recognize how much or how little an individual has in common with other people. "Each of the four sides of the card corresponds to an aspect of our life in this lifetime," wrote René Guénon in his book *Existential Tarot*. "On the left is your rational self, which expresses the interest and interest of the future; on the right is your emotional self.

"Each of the four sides of the card corresponds to an aspect of our life in this lifetime"



### Three of Cups

Often pictured as three women celebrating their connectedness in a dance with lifted cups, it could also be called 'sisterhood,' a real mutual admiration society. We shall hear more about it in our next post.

Claire Strickland of The Light of Sunday, adds:

'This is a lovely feeling. It is the last time I see my best friend and I love you so much. I have always felt like I was only with you for a few weeks. I would just get on with your life.'

She shared a photo of a social network message to her.

The message read: 'The last time I saw you you were two minutes away from reaching heaven. You are living in heaven now. I want to hug you today and say thank you.'

Danielle Monaghan, of Tanglewood, West Yorkshire, said: 'I wanted to say thanks as I feel so inspired by your post today. It really means a lot to me.'

'It's really cool for me, I never have experienced anything like this before,' Claire added.

two minutes away from reaching heaven



## Addiction in a broken place

### Four of Cups

A Four of Cups refers to a restless time, where a person may have become dissatisfied with life, and emotionally uncomfortable. They may feel that they are in a "broken place" and have no direction or hope, or may be unhappy with their life, and feel isolated. This usually leads to depression and/or feeling hopeless.

The list of symptoms that may indicate a Four of Cups disorder is extensive. In addition to losing self-confidence, the sufferer may have feelings of worthlessness, worthlessness of others, etc.

#### Diagnosis

Unfortunately, this disorder is so difficult to diagnose that it is rarely done. It's usually diagnosed by the individual himself.

#### Causes

Some possible causes of Four of Cups include:

Addictions, including smoking, alcohol and drug abuse, especially when anxiety is present

Dependency problems

Hypervigilance, and/or inability to relax

Abuse of drugs and/or alcohol

Overcrowding, particularly in public places

Other mental disorders





### **Five of Cups**

The Five of Cups is also sometimes called Inheritance, suggesting the cross-generational legacy of such tragedies. Violent family patterns magnified to a much larger scale can become war. The contrast between the first and the second version of the poem is striking: the first version is a rage of vengeance; the second is a celebration of a happy ending. Both suggest a return to the past.

'This world is red and dry and goes on and on,' poet-king John II of England declared in 1215, 'while the Gospels are painted on white walls.' That is the so-called 'red-and-dry' theme of the Five of Cups.

The red and dry world inside white walls.



### **Six of Cups**

The Six of Cup's traditional title, The Past, reminds us of our original nature, when we were young and enthusiastic, when anything was possible and the future was an open book. Today we are not sure of our own future.

We have been blessed to get this far. Our current age is our own age. Our message and our legacy is our own.

We are neither of us afraid to die or to see life as it is. We are not afraid to mourn, to drink, to sing and to smile.

We are not afraid to think and to believe.

We are neither of us afraid to reach for the stars and we are not afraid to let them go to meet the stars.

The Future is Unwritten.

### **The Future is Unwritten.**



### **Seven of Cups**

The Seven of Cups typically refers to works of the imagination, the use of dream and vision to invent a future different than the life one is currently living. This card reminds us that our outcomes are not set in stone. Life is never one single thing. It's never even really close to a certain time. It's as if we are dancing through a still life, then abruptly stopping mid-way to be greeted by the beginning. You can feel yourself changing. You can feel the energy of life in the air around you. You can see it moving in the air, bouncing off of each other, and changing as it goes. You can feel your own energy being moved forward by the magic of the moment, your own imagination.

2. This is the Death Card. What has happened, has happened. What's on the other side of death, will be on the other side of death. It's time to move on. If it's not your time, then you must do what is right. This is the day you have been waiting for. It's a time to do what is right, to move forward.

3. There are a number of ways we can relate to this card.

**A person dancing through a still life with life energy bouncing in the air.**



### Eight of Cups

Some Tarot decks illustrate the Eight of Cups showing a young woman who has just been molested and then cast aside by a stranger passing through her village. They are also telling stories of the newlyweds who take a vow of celibacy and who have no man to share their love. While the stories tell of the three love cards, I tend to think of them as showing the person who has been eaten up by the cards. The person who becomes a personality in the face of others, which often means the person who has to make a decision to betray a family member. It's the person that will choose death over love.

I saw my first Tarot deck recently at a meeting of the Catholic Women's House of Study in the Bronx. The cards are printed on thick brown card stock and are at least 10-inches tall. They are designed to appear as if they're made of actual cards but are actually made of cardboard, which is supposed to have the same feel as cards, with the same texture and feel. They're not engraved, nor are they inked. They have an eye-catching gold and black patina.

It's the person that will choose death over love.



### Nine of Cups

The Nine of this suit is sometimes titled Happiness, but it is also known as Victory. The image on several versions of this card often shows an innkeeper doing a brisk business and feeling very happy about it all.

Merchants and their goods may be depicted in this manner as well. The Economist describes the experience of a customer who is thrilled to discover he has ordered a completely new luxury item that he had long been hoping for. (A similar image is used on the cover of the 2011 Christmas book, which can be viewed [here](#).)

Dances, dance, dance, we're moving forward, smile, smile, smile

Ladies, can you dance with me

Swing with me

Swing with me

Swing, swivel, swing, swing, swing, swing

Can you swing like me?

Can you dance like me?

Can you swing like me?

Can you swing like me?

Can you swing like me?

Can you swing like me?

Can you swing like me?

Can you swing like me?

Can you swing like me?

Can you swing like me?

Can you swing like me?

Can you swing like me?

Can you swing like me?

Can you swing like me?

Can you swing like me?

Can you swing like me?

Can you swing like me?

Can you swing like me?

Can you swing like me?

Can you swing like me?

Can you swing like me?

Can you swing like me?

A Christmas book and swing dancers in a shop.



### Ten of Cups

The Ten of Cups traditionally signifies family and community, often showing a celebratory scene including many generations, crowned by a rainbow signifying the end of hard times. For the Lunar New Year, the ten men who hold the ten of cups during the ritual each bring a person or a group of people to his or her place of residence. They then each spit out a small amount of the cakes they have consumed. The people then take a bowl of rice and eat together, with the purpose of thanking the deity for the past year's prosperity and to show they are grateful to all for being able to have a good life.

The people of the Land of the Five Saints and the Ten of Cups may decide to bring a special meal to celebrate the day. This may be offered by their own families, or an invited guest may bring it. The message may be that they are grateful to have a good life, that the people and the Land of the Five Saints are doing well, and that they can keep going through the hard times. The emphasis may be on the personal quality of the food, or the fact that they were able to feed themselves.

### The people of the Land of the Five Saints and the Ten of Cups





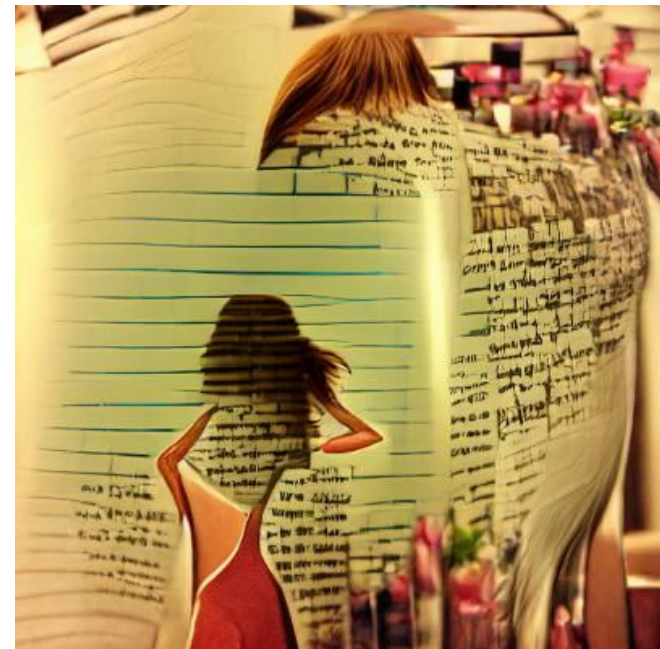
### Page of Cups

The Page of Cups represents a poetic, mystical, emotionally open young person, still tender and idealistic, given to flights of imaginative fantasy. She knows this is only the beginning of an incredible journey, and this is what brings her happiness and joy. Her faith and hope is long held in the Page of Cups, but it has become dimmed with the seriousness of the world around her, and the Page of Cups knows she must leave this life. For her journey, she can only dream. She must come to the pages of Cups, and see and feel for herself, for she is never alone.

A new life begins, but first the Page of Cups must wake from a dream. She has been dreaming of coming to the pages of Cups, and the dreams she has had have been terribly disturbing. They've shown her that she is dying. In this way, the Page of Cups begins the beginning of a new life. She wakes from the dream of coming to the pages of Cups and has a new life that is profound and unique.

On the page, she looks back at herself. She is on her way.

On the page, she looks back at herself.



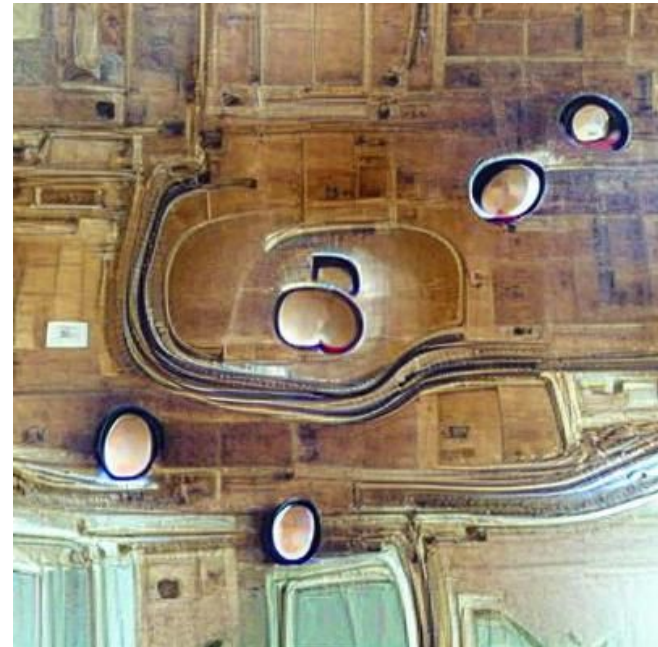
### **Knight of Cups**

This card is traditionally entitled the Knight, but in some modern decks appears as the Prince. Traditionally, this card in this suit has pictured a homecoming -- portraying a return to his true heart's home after a long journey. Like the prodigal son, he may be returning after long estrangement from all he holds dear. When not deployed, this card represents the "quiet" self, which holds one's innermost truths to be safe from the fuss and noise of the world.

Beyond these two basic suits, the other eight figures on the front card are usually invisible. In the illustration below, each of the eight figures is represented by an oval shape. Each of these figures is thus part of the Palace and carries some powerful "buzz" over its surroundings. Some figures on the back are actually different colors. The amount of "buzz" a figure carries over its surroundings is part of its personality. In addition to these eight figures, there are eight cards with different colors, and eight cards with different numbers.

Like the Duke and Duchess, all of the players on the front are "exalted," and their relationships with the players on the back are considered between them. This is also true for the "exalted" personages in the player's hand.

### **Eight ovals in a palace.**



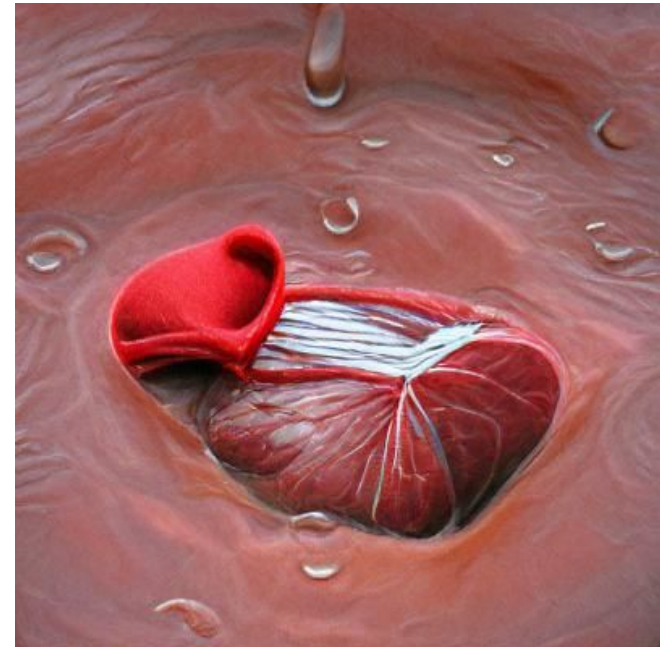
### Queen of Cups

Traditionally, representing the energy of a Queen, the Queen of Cups traditionally portrays a sensitive, vulnerable, omniscient woman who offers unconditional love. She could even be described as a spiritual mother figure, as she is the one who nurtures her subjects, inspires their endeavors, and guides them through the trials of life. In the ancient Celtic temples, this figure was called the Queen of Cups, because her cups were symbolic of her wisdom and knowledge. The cup represented her love and compassion, and the symbol of the hearts of the people who served her. The human heart was placed within a cup; it was symbolic of the human soul, that is, the energy of the whole human being.

The human heart in its totality is the source of our being, of our spirit, and of our life.

The mystical source of the human heart was also called the Queen of Cups because it is the source of life in general. In classical art, the human heart is typically represented by a cup, but it can also be represented by a container, a pillows, a blanket, or even an umbrella.

the human heart is typically represented by a cup, but it can also be represented by a container, a pillows, a blanket, or even an umbrella.



### King of Cups

Traditionally, representing the energy of a King, this card usually portrays a watery background, with a man seated on a throne, holding the Cup of Mystery in his hand. Occasionally, his cup is fulminating like the mouth of a volcano, emanating light, but never boiling over. It is also very rare to have this card represented with a man holding an energy, as it is always seen as a symbol of the God-man. It is an important symbol in Judaism, Christianity and Islam, as it is the symbol of the one who in his past has attained that highest form of knowledge. The realisation of the divine in one's mind is not at all an easy process, as it requires great spiritual strength and energy. This card is also sometimes used as an energy card, in reference to the power of the natural world and to the natural energy of life. It is the symbol of the divine energy that flows through life. The watery background, as in many other designs, is often regarded as an element of evil, as it indicates that all things have a spirit of their own, and that nothing is free from the power of forces. This is because of the human propensity to feel an energy which is opposed to it. The water represents the creative energy, and is often found in the hands of a man representing God, which can sometimes evoke the power of a spiritual force. The star is often seen as a symbol of cosmic light, which is strong enough to destroy its enemies. This is the power of the light, and may symbolise the one who has attained the highest degree of spiritual knowledge and may be the one who gives the most powerful energy to a situation. The space is often viewed as the sphere of existence, and it represents the power of the light which is natural to all things. When this card is represented as a man, he is typically seen holding a ray of light in his hand, which is at times seen as a reflection of himself. This is because the power of the light is inherent in all things. The background is often seen as a green background, symbolising the divine energy, and it is not uncommon to see this card symbolised with a symbol of the world, such as a glob of water.

A man holding energy in front of water, star, and space.



### Ace of Swords

In the image of this Ace, a single upraised sword represents your prime motive or guiding ideal -- the vision that guides you through life's changing fortunes with single-minded clarity. The sword is sometimes shown piercing a silver and/or laurel crown, a symbol of optimism implying evolution, progress, a sense of hope and victory. It is occasionally shown pointed downwards -- a darker message, which refers to sacrifice, challenges and a critical environment.

When we are given a single-minded vision, we are drawn to it like a magnet -- to conquer one's fears, achieve one's aspirations, reach one's goal or overcome one's personal hurdles. But when we are not so struck by it, we tend to revert to what is familiar -- that which we knew all along, with the knowledge that "it is not possible." Or, to quote the late and great Steve Jobs, "it is easier to succeed when you fail than when you succeed when you fail well."

Perhaps the clue lies in the fact that courage requires a clear and tangible vision, whereas failing without it is worse than failing because of a lack of vision. Sometimes a failing is easy and easy success is often elusive.

The way we prepare for failure, even in the face of great risk, is by enhancing our sense of self-confidence and overcoming our fears. When we are confident in our abilities, we are more able to overcome the uncertainties.

to quote the late and great Steve Jobs, "it is easier to succeed when you fail than when you succeed when you fail well."



### Two of Swords

The Two of Swords usually represents conflicting ideas or visions. These must be reconciled by communication in order to arrive in a harmonious place or to complete strategic negotiations. Mixed signals prevail.

Do not trust the Red Shirt to execute a mission; he may not know where to look. He may not be competent to speak the language. Only he knows what to do and how.

On the other hand, always keep in mind the following:

When two or more of a number of men express surprise or dismay at a given action, they represent the combined opinion of their people.

A person who is surprised at a mission done by one man may represent that mission as being unreasonable, incompetently executed, or rash.

A person who is surprised at a mission done by two or more men may represent that mission as being impractical, ill-defined, or wrongheaded.

To what extent should each man be trusted to deliver his own message? Should each man's opinion be believed?

If a man's opinion is not to be believed, he is not expected to communicate that opinion to his people.

### Red Shirt on a mission





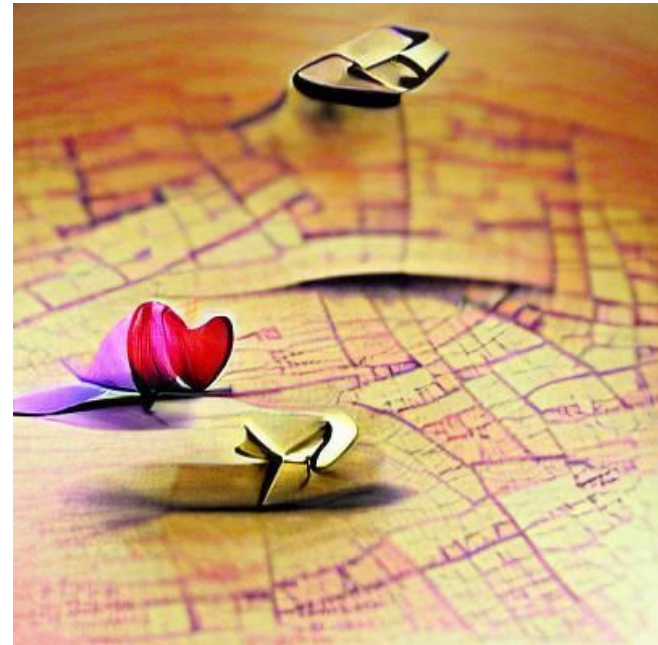
### Three of Swords

Traditionally, the Three of Swords signified separation or the breakup of a significant relationship, including the tragic emotions that come along with such an event. Some cards show the horizon filled with storm clouds and flashing lightning. Some cards tell the story of the transition into a new relationship. But the three of swords has also been used to indicate a renewed relationship (IEEE Spectrum, 1997) or a choice between a new relationship or the previous one (Darell Griffiths, Shamus Brown, Christian Burris, and D. A. Shackelford, *The Silent Weapon: Shakespeare, Mythology, and Society*, 1930, p. 96).

The scale of this sign is not heavily weighted toward one or the other. In other words, the three of swords is not a "domestic" sign, a "romantic" sign, or a "sexual" sign. It is a "territorial" sign, with everything in between (IEEE Spectrum, 1997).

The sign is usually used to describe a new relationship or a change of plans for one. When used in a narrative or narrative text, the sign is often used as a foreshadowing device.

a new relationship or a change of plans for one



### **Four of Swords**

A Four of Swords sends a message to take some time out, surrendering worldly concerns and retreating to a sheltered place of serenity away from the hustle and bustle. The oldest Tarot card images suggest a visit to the tombs of our ancestors, a place to contemplate your mortality and breathe in the dust of those who brought you here.

The Four of Swords comes from the German Riesenkräft, a word that means to purify. This idea is contrasted in the image with the last point, the Earth, which symbolizes life and purity. We are given three great images representing the Earth: a beehive, a tree, and a cradle.

The last point is our most immediate call to action, a call to action that calls for a bit of soul searching and to start healing the deep wounds of our lives. The opening of the tarot card references the old adage that we shouldn't ask too many questions until we know the answer.

The image at the end of the card refers to the contrast between the cracks in the Earth and the rocks we have dug out to raise them.

Why This Tarot Card?

Tarot cards are a powerful tool for self-reflection, for surrendering to the self and embracing the Spirit of the age.

A beehive, a tree, and a cradle in cracks in the earth.



### Five of Swords

Traditionally, the Five of Swords references the grim and sobering process of cleaning up the battlefield after a conflict. The war as a whole has not been won or lost yet, but in this skirmish there were grievous casualties. The difficulty in cleaning up the battlefield, or even just gathering the dead, is what Mardi Gras represents. Even the French legend of the Stonehenge of Crete has its origins in the same logic of death and decay. There is a literal death to go with the literal death of the day, and the cleansing of the battlefield is the next step. Mardi Gras can be seen as a means of cleansing the streets of an urban area, or, perhaps more realistically, as a means of seeking to end the cycle of death and decay.

The point of this is that as you start to act out, at the more drastic levels, of the idealism of the Mardi Gras, you may be drawn to the sublime. The reason, as Poulin writes, is that in the last analysis, our authentic selves are the most beautiful part of us. Our authentic selves are so intimately tied to our nature.

### Cleansing the battlefield



### **Six of Swords**

One early title for the Six of Swords was The Navigator -- one who has learned enough about the relation between the Earth and the heavens to be able to set a course across trackless oceans and arrive at a chosen spot on distant shores. The challenge of this task is to "cancel" the passage of time. The Navigator must never, ever advance in any measurable way toward the destination. He never even realizes the fact that time is speeding by him. With a glance across the line and a nod of his head, the Navigator will see the next segment of his journey on the immediate horizon.

Even so, every time the Navigator moves, he opens himself to the challenge of time itself. A year later, his ship arrives at its destination; a year later, his ship reaches the coast of Africa. A year later, his ship reaches the South Pole. In the course of the next year, his ship arrives at its destination, Antarctica.

Time is not deterministic. Our perceptions of time and its properties are profoundly dynamic, and constantly changing. In fact, one of the most remarkable aspects of the Six of Swords is how accurately the books depict the notion of time as a "particular space."

**The Navigator must never, ever advance in any measurable way toward the destination.**



### Seven of Swords

The image most often associated with the Seven of Swords is that of a canny warrior who has infiltrated into the enemy camp on the eve of a fateful battle, checking out their preparations and stealing their swords. The latter can be seen in a number of Tolkien's works, but was most often achieved in his *No Trespassing* in Middle-earth series.

Tolkien's popular image for the Seven was never conceived as one of a reckless, evil warrior. Indeed, he explicitly averred that the Seven were as reasonable as any other men.

In *The Fellowship of the Ring*, for example, Legolas is depicted as a diplomatic tactician who takes careful and careful planning to secure a safe passage to Mordor.

He is simply an observer, observing the preparations of the Elven leaders and moving carefully along the road to Mordor.

Of course, the Seven are warriors as well, and they are shown throughout the saga to be resourceful, practical and careful. It is true that Legolas initially displays some naiveté when it comes to the approach of the Ringwraiths, and is made a fool of by Frodo and Sam.

Legolas is depicted as a diplomatic tactician who takes careful and careful planning to secure a safe passage to Mordor.





### Eight of Swords

Often called 'The Test,' the Eight of Swords usually pictures a warrior running the gauntlet, subjected to harsh examination, who finds out just how tough he or she is (or isn't) in the process. These chapters have not only been a staple of fantasy stories for thousands of years, but also become a touchstone for the recent TV series Game of Thrones.

In each of the eight chapters, the warrior must defeat a number of hostile forces by outmaneuvering and outsmarting them. Some of the chapters also feature a warrior wearing an elven skin or calling himself a "soulflayer," or a "dark horse," or a "nemesis of the realm." The battle takes place in the final chapter and is sometimes depicted with a cliffhanger, like a flashforward to a different chapter. It's a fascinating examination of the idea of courage and the power of truth.

But the eight chapters have also become a rite of passage in fantasy storytelling. In several of these chapters, the warrior must become the hero of the chapter, gaining the respect of others and causing them to turn on their enemies. These chapters can also be analyzed as testing a character.

a warrior wearing an elven skin or calling himself a "soulflayer," or a "dark horse," or a "nemesis of the realm."





### Nine of Swords

The Nine of Swords has a special resonance with the Middle Ages, because it figures the plight of a woman who is alone in the world, during the centuries when women had no personal rights, no ability to inherit property or use the law in their own defense. That's a story that many women and girls in the Middle Ages experienced, and it's been told often and powerfully by authors like Anne McCaffrey, Alice Munro and Jacqueline Carey.

I think it's one of the most beautiful stories of heroism of that era. It's not told by a male author, but I think it has such power because of its relevance to today. I feel that as well. I can't think of a better way to describe that story than in the way people talk about the "Third Wave" of feminism.

What does it mean to be a feminist writer in 2017?

It means you're a feminist today if you believe that women should have the same rights and opportunities as men, and that men and women should not be discriminated against for any reason, including sexual orientation or gender identity.

It means you're a feminist if you feel, as a woman, that women should be free to live their lives how they want.

### feminist writer



### **Ten of Swords**

The Ten of Swords represents finality, the end of something. As is easy to grasp from the picture, there is no hope for revival here. There are no more days of fighting. There is no more suffering. There is no hope of salvation.

This is the ultimate torment for those who have already lost.

The time has come. The day of reckoning has arrived.

I could not face this. I could not understand why I would be made to face this. I never thought that I would experience such a thing. No, it has always been like this, no matter the amount of training I had been given, no matter the sacrifices I had to make.

I am aware that even if I were to win, I would only be going against nature.

"You... Are you even human?"

"I am not human. But I am not a demon. We both exist. How can you say I am one when I am neither?"

The monster's mouth closed up, and I knew I had to do this.

"Are you still in that world?"

I am not human. But I am not a demon. We both exist.



### Page of Swords

This person is acting as the eyes and ears of her patron, and so she is sometimes referred to as The Watchman. Even kings are powerless if this messenger chooses to use her access to sensitive information for her own gain, as is implied by her other name, The Spy.

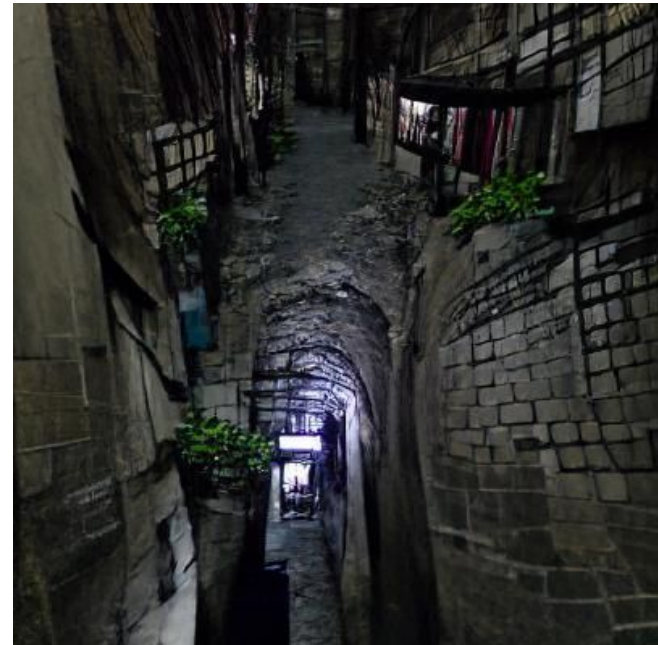
You know it's true. You think that it's all a matter of coincidence that you're walking through this narrow passage between a dark alley and the ramparts of a city that's been abandoned for centuries. It's a mindfuck of a situation, you know.

You have to look carefully. It's no good looking, you're not sure what you're looking at, you're looking for something to distract you from the horrifying sight of something wet and warm on the ground. You don't think you're looking for the pieces of an ancient dagger, though; you're looking for something that's a little too bloody for that.

"What the hell is this?" a strange voice asks. You turn to see a man with the face of a painter, and this may well be his real name, or he may have a false one.

"I don't know," you answer. "Someone's calling for help."

narrow passage between a dark alley and the ramparts of a city that's been abandoned for centuries



### **Knight of Swords**

Traditionally, the Knight of Swords portrays the restless mind, aroused by thoughts of offense and defense, storming around searching for a target to pounce on. More recently, more and more people have been playing the role of the Enemy Within, of people who have both sides of their personalities, or "negative" and "positive" sides, come to the surface, and a conflict and war between them is brewing.

The Knight of Swords is always at war with himself, the Enemy, for he desires victory above all else. He will fight any evil or attack the enemy, or rather, in this case, the person or persons who have come to challenge him. He is not defeated by those who will not fight, or by those who attack him, for the Knight of Swords is an actual warrior, even if his real name is unknown to most people, and sometimes he does not even know it.

However, what he does know is that to be victorious in battle, a person must take the very nature of battle into account. Only the Enemy will attack him, and he must be prepared for such attack.

### **nameless warrior**



### Queen of Swords

Representing the energy of a Queen, this feminine power was traditionally known as a widow, crone or divorcee. We know from mythology that the Queen could win the hearts of men by promising them anything in return. The original wives of the Gods were given special gifts such as protection against evils, immortality, respect, wealth, and some even could rule over a new planet. It wasn't until the invention of the vibrator in the 1970's that this role was given to women who could satisfy men by using the vibrator on them. This became a fetish in the 1970's and can still be found on a lot of vibrators today.

Now, the vibrator has evolved into an erotic device that allows the man to get off with the woman by stimulating her clit or clitoris or both. It has become much more than a toy for men and women. The vibrator has become the sexualization of a woman's body, and she has given it the name "The Sheath".

This is where it gets interesting.

### Vibrator



### King of Swords

Traditionally, representing the energy of a King, this masculine energy form is The Adjudicator, the wise judge or mediator. He assesses the merits and demerits of the cause of an event and decides whether the event occurs in the life of God, the Earth, or a natural event of a plant or animal. This interpretation of the term "Judgment" is not new, but it is now done in a similar way, that of the "Artificer".

### King Adjudicator

The King Adjudicator or the wise judge of causes is a modern interpretation of the King of the Universe. The King of the Universe, the Creator of everything, is represented in the artwork as the powerful guardian of the Universe, but also a beautiful King Adjudicator and Ruler of the Universe. He is depicted as a lion with three heads, with the upper head representing the Earth and the lower head the sun. The upper head has five eyes, the lower three are closed. He is also depicted with the head of a man with a lion's head, and a lion's body.

### King Adjudicator





### **Ace of Pentacles**

The Ace of Pentacles is usually pictured with a garden or agricultural backdrop, and symbolizes a seed. This is the first of a series of six symbols (each symbol is associated with one of the cardinal directions) that are used in conjunction with a sun rising in the west, or with a portent that foretells the fate of the person. In general, the Ace of Pentacles is the first symbol in any particular arcana, as the sun is the first object of the compass.

The third of the six arcana is the Hand of Pentacles, or the Pentacle of Solomon, as seen in the diagram below. The Hand of Pentacles represents God's power to work miracles, and will be used by God in a multitude of places. The Hand of Pentacles is one of the most frequently used arcana in the New Age, and is commonly linked with the concept of an alpha and the omega, and with the concept of the child or Christ. The Hand of Pentacles represents the time period known as the "age of the god".

**A seed, a rising sun, a compass, and God.**



### Two of Pentacles

The Two of Pentacles generally features a youth juggling, with two coins juggled in figure-eight fashion, or just the coins without the youth -- one heads up, the other tails -- both flipping in the air. The person holding the head is said to be the possessor of the powers of prophecy and blessing, and the person holding the tail is said to be the bearer of curses.

A great deal of coin tossing is done by the zodiac, and the images and name of a constellation form the cover of a coinage known as "The Book of Zodiacs" that is sold at family parades throughout Canada.

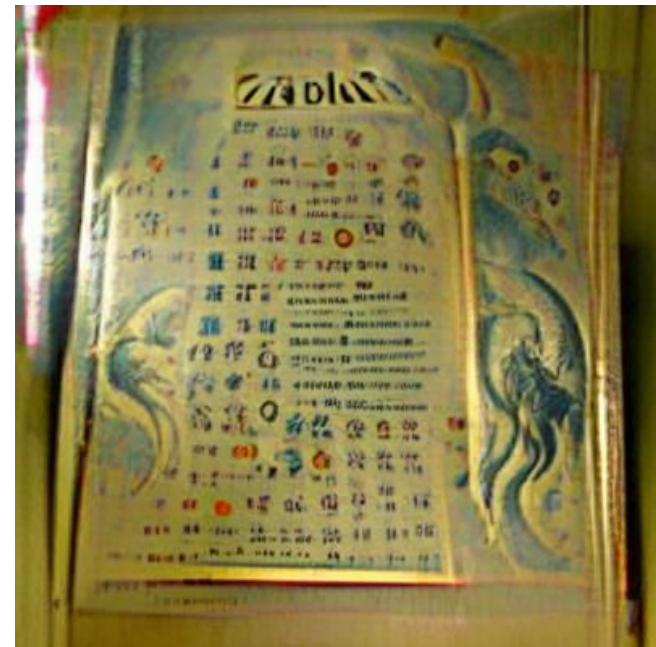
Doing this also invites ridicule, as a great many people do not realize that the zodiac is just another way to refer to the number ten, or vice versa.

What's your view on coin throwing? And is there any kind of a secret to it?

Dana Guyer is the author of "The Complete Book of Dominion Magic" available from Stamps.com, or at Amazon.com.

This article originally appeared in Alberta Magic Magazine.

### The Book of Zodiacs



### Three of Pentacles

Here we usually see a master craftsman conferring with his masons on the installation of a beautiful stained-glass window in the cathedral. He is now called upon to write his book of notes for the painting, and to bring it to a close. After a long evening's effort he is due to go to bed early. The day comes and he is so tired he cannot put a stop to his work. He comes to the conclusion that it must be one of those monumental, dazzling, and entertaining works that were born only in the heart of a royal court in Europe, and therefore the artist should abandon the result. He should let the wood burn to ashes, and the walls of the church fall into the earth. The work is finished, but the masons want it to be engraved with an inscription. He cannot do it. So he calls on the poet, "the American artist," to lend him a hand. "The American artist" is a rather odd name for a mere Irishman. He is well known for his coarse, declamatory verse.

He should let the wood burn to ashes, and the walls of the church fall into the earth.



#### **Four of Pentacles**

We see a person who is stuck in their misunderstanding of how the material plane works. He's afraid to let go of his four measly coins, because he doesn't know he has to give in order to get. The only thing he knows is that he wants the coins. This is the mind that you are trying to help. When you talk to the person, say, "I see you are stuck. I understand what you're afraid of. You have to give in and just go with the flow." If he can't let go, that's okay. If he can, that's fine. But if you don't understand what you're talking about, it's not a good sign. If you're talking to him about a strawman, it's not a good sign either.

On the other hand, if you really want to help him, don't stop talking about things. It's not that he can't get what you're talking about. It's just that he doesn't know how to follow the instructions. Remember, he's still confused. In other words, he has to learn to let go.

**You have to give in and just go with the flow.**



### **Five of Pentacles**

The sickly poor freezing outside a well lit church warn of the painful outcomes of bad choices, rather than focusing on the dynamic tension of the choosing itself. And yet, the presence of God provides this essential cold comfort.

Today, there is a growing body of research showing that the impulse to provide support and help is a fundamental human need. From the writing of the prophet Joel to the work of the Apostle Paul, we are born with the capacity to provide for the needs of others. But we lack the ability to be responsible for the well-being of ourselves and others. We often lack the energy or the capacity to consider the role that we play in the well-being of others. We are not good enough to make decisions for ourselves or to make a difference in their lives, because our lives are not enough.

This is why, in a world where our health and survival are so heavily dependent on our ability to provide for ourselves and others, we need to learn to truly understand and appreciate our responsibility to ourselves and to others. Our lives are our own, and it is up to us to take them in hand.

**we need to learn to truly understand and appreciate our responsibility to ourselves and to others**





### Six of Pentacles

The picture shows a rich man giving alms, his reputation enhanced from his giving, but without having helped anybody really better him or herself. Sometimes there is an inference that the giver will be expecting something back for his giving, perhaps sexual favors.

"So, someone should give that man a cat or a rabbit, and then the other giver should come and sit down at his side."

"Just what is this all about?"

"It's just a simple folk-tale."

"I see."

"That's why people hear it and are fascinated. Nobody's trying to tell anyone what to do. They just say it's a fairy tale. How could someone really do something like that?"

"I heard it's the reason a lot of men get nervous when they see me, it's as if they're afraid that they're going to get to touch me."

"Who?"

"You don't know, you just saw it."

"How could it be?"

"You saw it! You were in the church and the rooster crowed. You just had your morning coffee. You took your eye off the window and you heard that."

"It's just a simple folk-tale."





### Seven of Pentacles

The traditional concept is cultivation, with an attitude that slow and steady wins the race, with faith in nature's assistance. But technology is winning the race as well. Each of us has a camera that we can use to "expose" the world's environment. In our case, the news has altered the world by adding new information to what we thought was true. In essence, we are the world's news. For us, the world has changed.

Therefore, we must add to our news, as it is, new information, and that is how all of this occurs.

However, to truly acknowledge the news is to believe in its truth. If we simply let the news take us by the hand, we will lose sight of our purpose as individuals and as a people. To be sure, we should not lose sight of our purpose. The significance of this reason is that the people of this world have the ability to search for information that is new to them, and the ability to use that information to inform their decisions.

Each of us has a camera that we can use to "expose" the world's environment.



### Eight of Pentacles

We see here the successful artisan spending time at his bench, hammering out the commissions he has attracted because of his skill. This artist is the best in her or his class, so popular that it's become difficult keep up with demand. The manager's response is simple: "I can't pay you more than your skill." In other words, "what you are doing is good enough for me."

He or she might also respond, "But it's not good enough. We want better." At this point the manager stops arguing, and says, "Well, you're better than I am." He or she starts arguing even harder, saying, "We need someone better, you're just not that good." This is a sign of disappointment. They don't understand that the manager is not giving them their best, they're only giving them the opportunity to improve.

What's the best? Why is this so important?

The manager is trying to tell you that there is no one best in their organization. You can't be right, the manager is right. It's a simple equation: "I have too many people with too little experience. It's impossible to get good with only one."

The manager is trying to tell you that there is no one best in their organization. You can't be right, the manager is right.



### **Nine of Pentacles**

The Nine of Pentacles points to a person who is financially secure enough to live comfortably. This is about someone supported by her own business, inheritance or property.

The names of the nine are:

or He, who is clothed with the Light of Truth.

or Jesus Christ, who is the Light of Truth.

or the Church.

Or this list of items that a person should always have with them.

Or this list of things that a person should never have with them.

It is very important to have an unlimited supply of the items on this list. Even a bit of money each month is better than no money at all. In fact, a person should never be without the following:

- A key to the house.
- A phone.
- Money in the bank.
- An affordable car.
- A good teacher.
- A safe place to store your money.
- A radio or TV.
- A job.
- A place to go for a long walk.
- A lawyer.

Even a bit of money each month is better than no money at all.

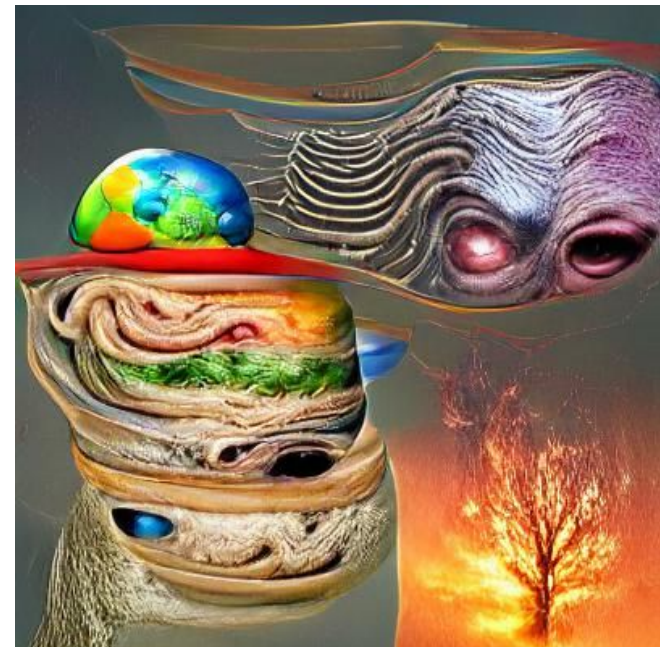


### **Ten of Pentacles**

The Ten of this suit represents the final result of cumulative efforts -- perhaps after generations of effort -- resulting in such abundance that it directly and indirectly supports a lot of people. One layer of meaning refers to the pride of supporting your own lineage of well-loved souls. The second layer describes the diversity of the people who live on the Earth, including people who live on other planets as well as in space, people with different languages, people of different ethnicities, people with different languages and many more. The third layer includes the ages of the peoples, from when the Earth was formed and now. The fourth layer is the whole spectrum of human beings, from the well-to-do to the underclass to the powerless, from those in power to those struggling against it, from rich to poor. And finally, the fifth layer is the whole spectrum of the human community.

Heavily influenced by the earthlings, Shoko Asahara's worldview was not an isolated example. That's because people of various races, nations, languages and ethnicities all lived on the Earth. However, he was the first to try to fully assimilate such diversity by identifying different aspects of the human being and his or her circumstances, such as his or her culture.

### **the five layers of existence of earthlings**



### Page of Pentacles

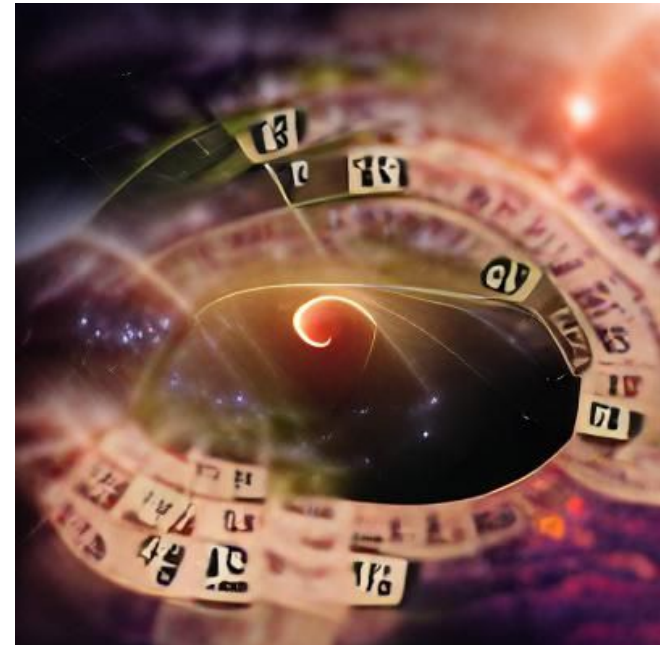
Page of Pentacles' energy has to do with learning about compound interest and abundance. Her attention is focused on learning the natural laws that pertain to natural synergies. She studies the fundamentals of the spiritual laws and uses that knowledge to build a more purposeful life. She is interested in building lasting friendships and creating new ones. As a part of this process she does physical activity.

We have a tradition of identifying life-changing events with numbers in the ecliptic. Sometimes it is a blessing. Other times, it is a curse. Like any large-scale interaction, the circumstances that result in a number are influenced by the number and the context in which the number is created. This is how all of life has been evolving for millions of years.

What is a number?

A number is a complex collection of numerical components. It is the sum of two numbers: a positive and a negative. A number is denoted by a numeral. When you are playing the numbers game or counting, you are counting up your good things and counting down your bad things.

We have a tradition of identifying life-changing events with numbers in the ecliptic.





### **Knight of Pentacles**

Traditionally, the Knight of Pentacles pictures an overseer of fertility and growth. His period of ascendancy is during the quiet years between conflicts, when everybody can collaborate in raising the collective standard of living. He is the leader of the pack, who always sets the pace and the pace of the entire pack. He knows when to ride and when to walk, and he is both skilled at delivering the message and at leading the charge. His simple rule: be present, listen, and follow.

#### **Gardens of Desire**

The Garden of the Gift (see diagram below) is a time for tenderness, compassion, and restoration. For most of us, that's not enough. We need to make our gardens of desire into gardens of spring. It's time to get outside, walk in nature, and experience the little details that bring us joy and happiness.

As we do, we will discover beautiful, colorful and well-planned, imaginative gardens of fresh seeds, flowers, vegetables, fruit, and herbs. We will also discover intriguing plants that offer healing or enriching qualities. You will also see the rich abundance of varied landscapes.

**We need to make our gardens of desire into gardens of spring.**





### Queen of Pentacles

Traditionally, the Queen of Pentacles was pictured as the Sibyl or Oracle, perhaps a Tarot reader, who made herself available to people in need, no matter what their social class or situation.

In fact, today, many women are increasingly looking to the Goddess to help them navigate their personal and professional lives, and to help them navigate the world.

In one sense, the Queen of Pentacles helps us to see that we are all spiritual beings, not just those who possess magical powers. In another sense, the Queen of Pentacles is a symbol of the power of one woman to help a large group of people. In this sense, the Queen of Pentacles becomes a reminder that all women are powerful.

All women are powerful

Some may see this symbolic shift as a step backwards. Certainly, this concept of women becoming more powerful, including the Queen of Pentacles, should not be viewed as a negative. Instead, it should be seen as an opportunity to re-visit and re-define our definitions of power.

While the Queen of Pentacles is not new, the symbolism is.

an opportunity to re-visit and re-define our definitions of power



### **King of Pentacles**

Representing the energy of a King, he or she is one who has accomplished a lot in life and has arranged his or her affairs so that he has much good to show for it.

King is also the name of the symbol of the Seven Deadly Sins. A King's sins are the things that do not belong to him or her. They are the things that make them imperfect, though, and therefore less deserving of love. This sin of being a bad King is moreso about being a bad person who puts others down and thinks everyone else is better than he or she is.

However, some people are supposed to be Kings and that's why they're called so. As a King, they should have a sense of right and wrong, and they should be willing to risk the wrath of the God of Destruction if necessary to protect the people in their charge. However, if they are going to do that, they are supposed to know when to stop and how to back away from danger and strife.

People that are Kings are also supposed to be able to protect their people from the unrighteous and to be able to call forth the power of the true God.

they should be willing to risk the wrath of the God of Destruction if necessary to protect the people in their charge

